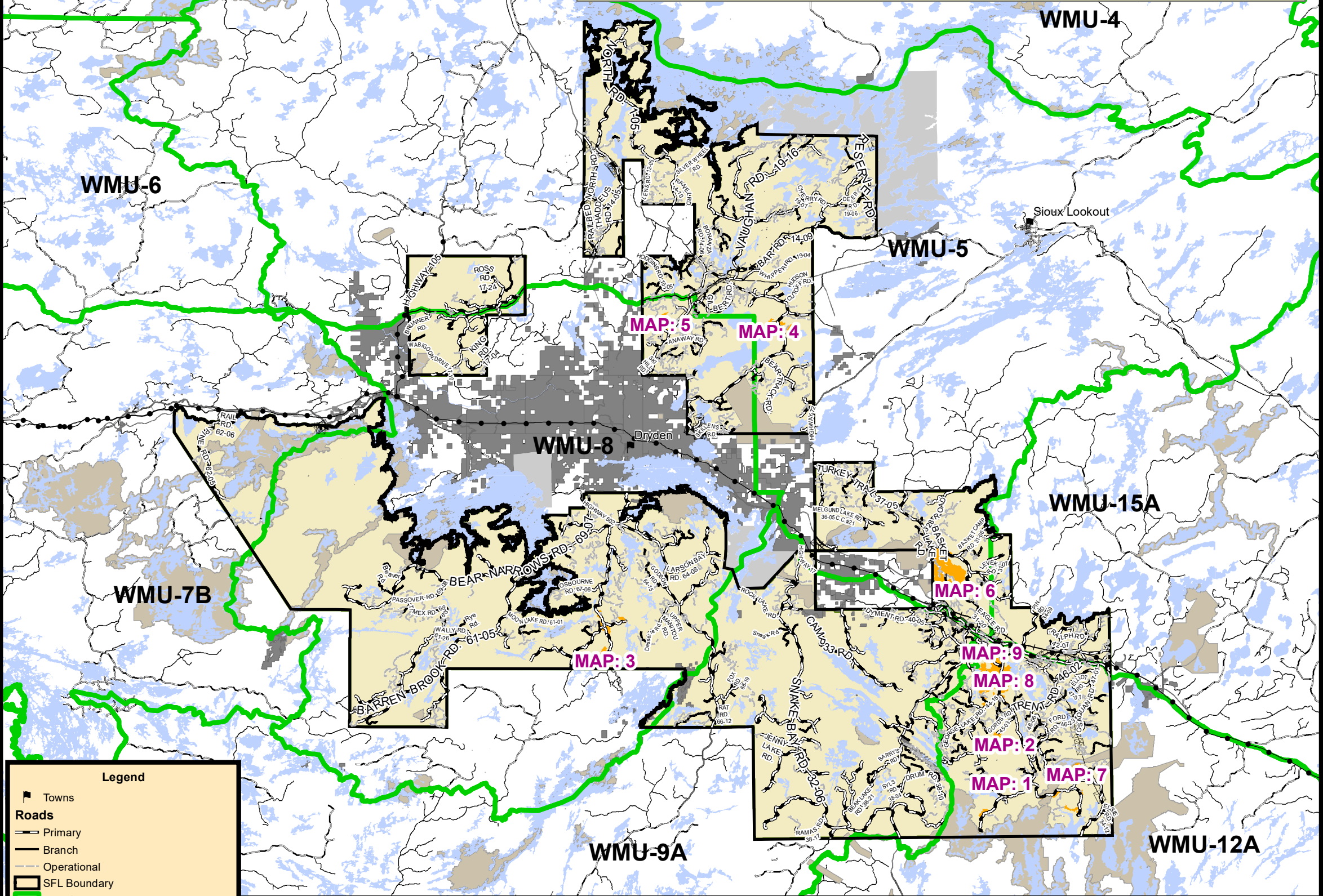


Overview

Areas will be closed during active operations only



Legend

Towns

Primary

Branch

Operational

SFL Boundary

Wildlife Management Unit

Water

First Nations Reserve

Parks and Conservation Reserves

No Hunting or Possession of Firearms

Patent Land

Pipeline

Railway

Transmission line

DISCLAIMER:
This map should not be relied upon as a precise indicator of routes, as a guide to navigation, to establish legal title, boundary lines or locations of improvements. Domtar Inc. and the Ontario Ministry of Natural Resources and Forestry shall not be liable in any way for the use of, or reliance upon, this map or any information on this map.

© Queen's Printer for Ontario 2021
© Domtar Inc. 2021

NOTES:
Planimetric Base Features maintained and provided by the Ontario Ministry of Natural Resources and Forestry (OMNRF, July 2017, Forest Information Manual. Toronto: Queen's Printer of Ontario). Transportation and Forest Resources information are from Domtar Inc. company files.



Wabigoon Forest

ATTENTION HUNTERS
NO HUNTING OR POSSESSION
OF FIREARMS AREAS 2021
Cross-hatched Areas in Dryden District
CLOSED DURING ACTIVE OPERATIONS ONLY

Please Observe and Obey All Signs
ONTARIO GOVERNMENT NOTICE:
Closures are in effect during the open rifle
season (moose / deer) for the respective
Wildlife Management Unit during active
operations only.

**Firearms must be encased when
traveling through cross-hatched
area when signs are present.**

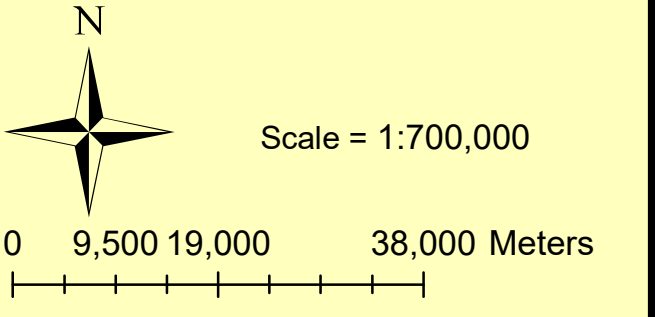
The areas will be clearly signed and hunters
are required to obey these signs.

Maps showing potentially closed areas will be
available for viewing in the M.N.R.F. office
in Dryden and at major issuers of hunting
licenses in the Dryden area as well as at the
Domtar Gatehouse.

All closures are made under the authority of
Subsection 10(2) of the Fish and Wildlife
Conservation Act, R.S.O. 1997, Chapter 41,
for the purposes of safety of woods workers.

FOR FURTHER INFORMATION CONTACT:

Julie Edwards, R.P.F. Operations Forester Domtar P.O. Box 4004 Dryden, ON P8N 3J7 Phone (807) 223-9790	OR	Daniel Yeboah, R.P.F. SFL Planning Forester Domtar P.O. Box 4004 Dryden, ON P8N 3J7 Phone (807) 223-9090
---	----	---



MAP: 1

Areas will be closed during active operations only



Wabigoon Forest

ATTENTION HUNTERS

NO HUNTING OR POSSESSION
OF FIREARMS AREAS 2021

Crosshatched Areas in Dryden District
CLOSED DURING ACTIVE OPERATIONS ONLY

Please Observe and Obey All Signs

ONTARIO GOVERNMENT NOTICE:
Closures are in effect during the open rifle season
(moose / deer) for the respective Wildlife
Management Unit during active operations only.

**Firearms must be encased when
traveling through cross-hatched
area when signs are present.**

The areas will be clearly signed and hunters
are required to obey these signs.

Maps showing potentially closed areas will be
available for viewing in the M.N.R.F office
in Dryden and at major issuers of hunting
licenses in the Dryden area as well as at the
Domtar Gatehouse.

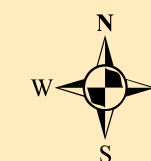
All closures are made under the authority of
Subsection 10(2) of the Fish and Wildlife
Conservation Act, R.S.O. 1997, Chapter 41,
for the purposes of safety of woods workers.

FOR FURTHER INFORMATION CONTACT:

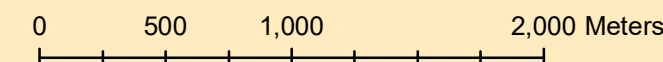
Julie Edwards, R.P.F.
Operations Forester
Domtar
P.O. Box 4004
Dryden, ON P8N 3J7
Phone (807) 223-9790

OR

Daniel Yeboah, R.P.F.
SFL Planning Forester
Domtar
P.O. Box 4004
Dryden, ON P8N 3J7
Phone (807) 223-9090



1:30,000



This map is not intended for navigational use.

Legend

- First Nations Reserve
- No Hunting or Possession of Firearms
- SFL Boundary
- Wildlife Management Unit
- Trails
- Utilities**
 - Pipeline
 - Railway
 - Transmission line
- Roads**
 - Highway
 - Streams
 - Operational
 - Branch
 - Primary
- Water
- Parks and Conservation Reserves
- 2021 Harvest Area
- Patent Land

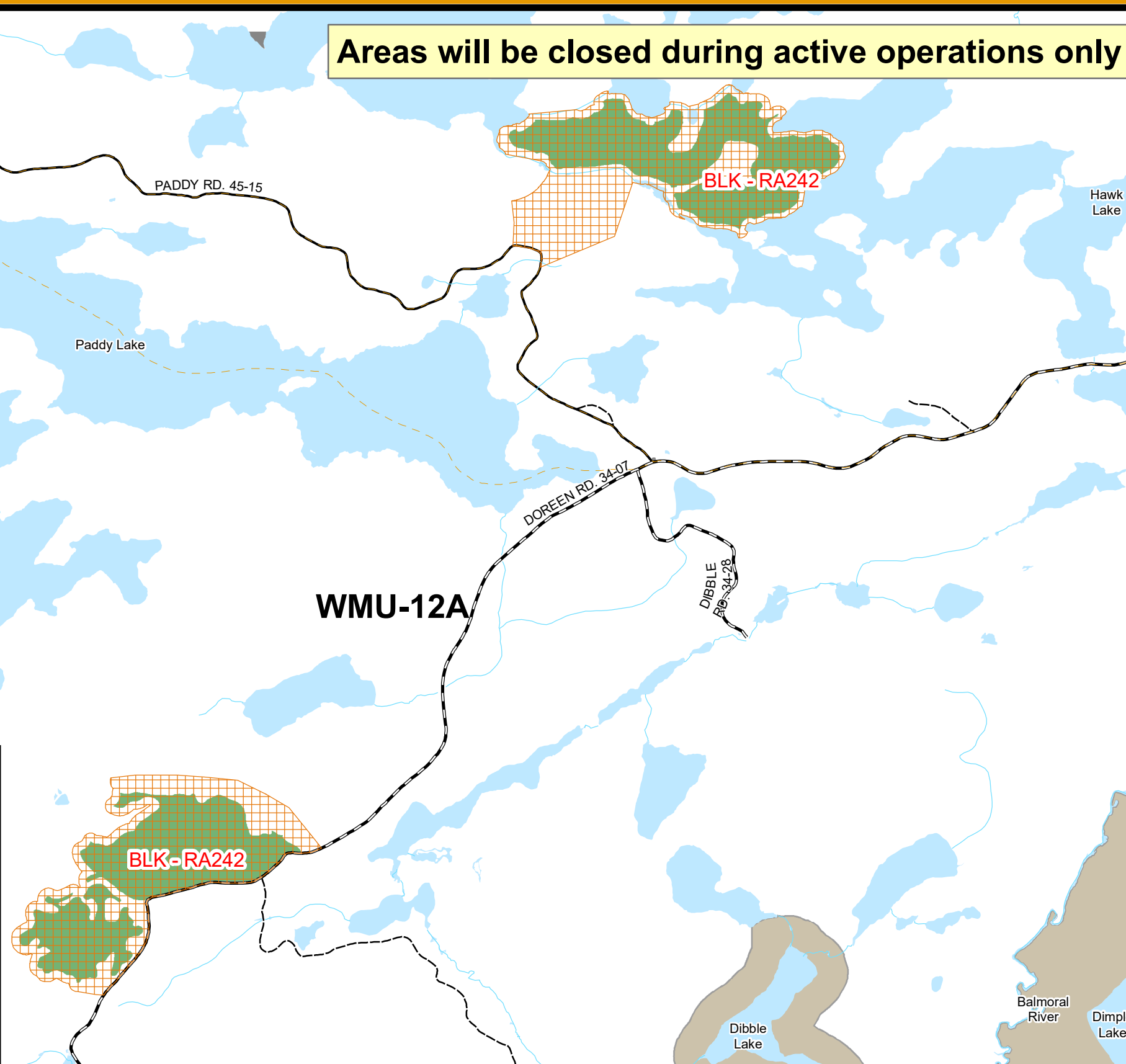
DISCLAIMER:

This map should not be relied upon as a precise indicator of routes, as a guide to navigation, to establish legal title, boundary lines or locations of improvements. Domtar Inc. and the Ontario Ministry of Natural Resources and Forestry shall not be liable in any way for the use of, or reliance upon, this map or any information on this map.

© Queen's Printer for Ontario 2021
© Domtar Inc. 2021

NOTES:

Planimetric Base Features maintained and provided by the Ontario Ministry of Natural Resources and Forestry (OMNRF, July 2017, Forest Information Manual. Toronto: Queen's Printer of Ontario). Transportation and Forest Resources information are from Domtar Inc. company files.



MAP: 2

Areas will be closed during active operations only



Wabigoon Forest

ATTENTION HUNTERS

NO HUNTING OR POSSESSION
OF FIREARMS AREAS 2021

Crosshatched Areas in Dryden District
CLOSED DURING ACTIVE OPERATIONS ONLY

Please Observe and Obey All Signs

ONTARIO GOVERNMENT NOTICE:

Closures are in effect during the open rifle season
(moose / deer) for the respective Wildlife
Management Unit during active operations only.

**Firearms must be encased when
traveling through cross-hatched
area when signs are present.**

The areas will be clearly signed and hunters
are required to obey these signs.

Maps showing potentially closed areas will be
available for viewing in the M.N.R.F office
in Dryden and at major issuers of hunting
licenses in the Dryden area as well as at the
Domtar Gatehouse.

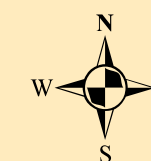
All closures are made under the authority of
Subsection 10(2) of the Fish and Wildlife
Conservation Act, R.S.O. 1997, Chapter 41,
for the purposes of safety of woods workers.

FOR FURTHER INFORMATION CONTACT:

Julie Edwards, R.P.F.
Operations Forester
Domtar
P.O. Box 4004
Dryden, ON P8N 3J7
Phone (807) 223-9790

OR

Daniel Yeboah, R.P.F.
SFL Planning Forester
Domtar
P.O. Box 4004
Dryden, ON P8N 3J7
Phone (807) 223-9090



1:30,000

0 500 1,000 2,000 Meters

This map is not intended for navigational use.

Legend

- First Nations Reserve
- No Hunting or Possession of Firearms
- SFL Boundary
- Wildlife Management Unit
- Trails
- Utilities**
 - Pipeline
 - Railway
 - Transmission line
- Roads**
 - Highway
 - Streams
 - Operational
 - Branch
 - Primary
- Water
- Parks and Conservation Reserves
- 2021 Harvest Area
- Patent Land

DISCLAIMER:

This map should not be relied upon as a precise indicator of routes, as a guide to navigation, to establish legal title, boundary lines or locations of improvements. Domtar Inc. and the Ontario Ministry of Natural Resources and Forestry shall not be liable in any way for the use of, or reliance upon, this map or any information on this map.

© Queen's Printer for Ontario 2021
© Domtar Inc. 2021

NOTES:

Planimetric Base Features maintained and provided by the Ontario Ministry of Natural Resources and Forestry (OMNRF, July 2017, Forest Information Manual. Toronto: Queen's Printer of Ontario). Transportation and Forest Resources information are from Domtar Inc. company files.

WMU-12A

BLK-RA264

MISSING LAKE
RD. 45-38

KELLAR
RD. 45-60

Doreen Lake

GORD'S RD. 45-03

MILE 10
RD. 45-44

DOREEN RD. 34-07

MORIN RD. 45-09

45-06

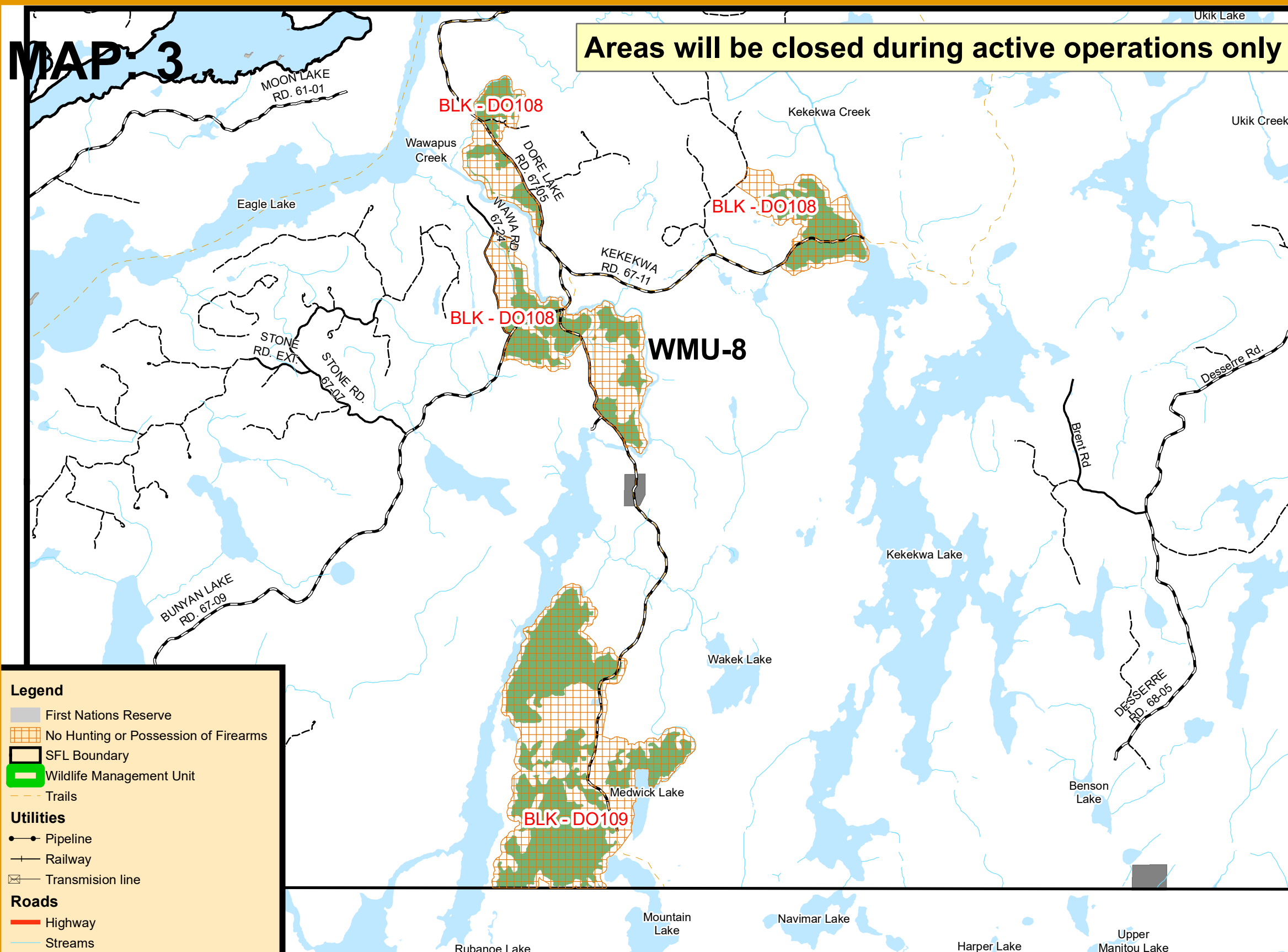
E HAVEN
RD. 45-10

KIN ACCESS
RD. 45-43

DRAKE RD. 45-19

MAP 3

Areas will be closed during active operations only



DISCLAIMER:
This map should not be relied upon as a precise indicator of routes, as a guide to navigation, to establish legal title, boundary lines or locations of improvements. Domtar Inc. and the Ontario Ministry of Natural Resources and Forestry shall not be liable in any way for the use of, or reliance upon, this map or any information on this map.

© Queen's Printer for Ontario 2021
© Domtar Inc. 2021

NOTES:
Planimetric Base Features maintained and provided by the Ontario Ministry of Natural Resources and Forestry (OMNRF, July 2017, Forest Information Manual. Toronto: Queen's Printer of Ontario). Transportation and Forest Resources information are from Domtar Inc. company files.



Wabigoon Forest

ATTENTION HUNTERS
NO HUNTING OR POSSESSION
OF FIREARMS AREAS 2021
Crosshatched Areas in Dryden District
CLOSED DURING ACTIVE OPERATIONS ONLY

Please Observe and Obey All Signs
ONTARIO GOVERNMENT NOTICE:
Closures are in effect during the open rifle season
(moose / deer) for the respective Wildlife
Management Unit during active operations only.

**Firearms must be encased when
traveling through cross-hatched
area when signs are present.**

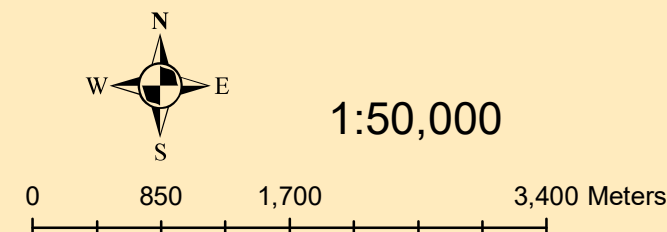
The areas will be clearly signed and hunters
are required to obey these signs.

Maps showing potentially closed areas will be
available for viewing in the M.N.R.F. office
in Dryden and at major issuers of hunting
licenses in the Dryden area as well as at the
Domtar Gatehouse.

All closures are made under the authority of
Subsection 10(2) of the Fish and Wildlife
Conservation Act, R.S.O. 1997, Chapter 41,
for the purposes of safety of woods workers.

FOR FURTHER INFORMATION CONTACT:

Julie Edwards, R.P.F. Operations Forester Domtar P.O. Box 4004 Dryden, ON P8N 3J7 Phone (807) 223-9790	OR	Daniel Yeboah, R.P.F. SFL Planning Forester Domtar P.O. Box 4004 Dryden, ON P8N 3J7 Phone (807) 223-9090
---	----	---



This map is not intended for navigational use.

MAP. 4

Areas will be closed during active operations only



Wabigoon Forest

ATTENTION HUNTERS

NO HUNTING OR POSSESSION
OF FIREARMS AREAS 2021

Crosshatched Areas in Dryden District
CLOSED DURING ACTIVE OPERATIONS ONLY

Please Observe and Obey All Signs

ONTARIO GOVERNMENT NOTICE:

Closures are in effect during the open rifle season
(moose / deer) for the respective Wildlife
Management Unit during active operations only.

**Firearms must be encased when
traveling through cross-hatched
area when signs are present.**

The areas will be clearly signed and hunters
are required to obey these signs.

Maps showing potentially closed areas will be
available for viewing in the M.N.R.F office
in Dryden and at major issuers of hunting
licenses in the Dryden area as well as at the
Domtar Gatehouse.

All closures are made under the authority of
Subsection 10(2) of the Fish and Wildlife
Conservation Act, R.S.O. 1997, Chapter 41,
for the purposes of safety of woods workers.

FOR FURTHER INFORMATION CONTACT:

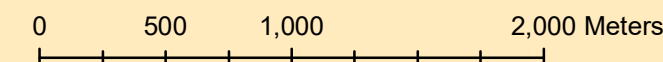
Julie Edwards, R.P.F.
Operations Forester
Domtar
P.O. Box 4004
Dryden, ON P8N 3J7
Phone (807) 223-9790

OR

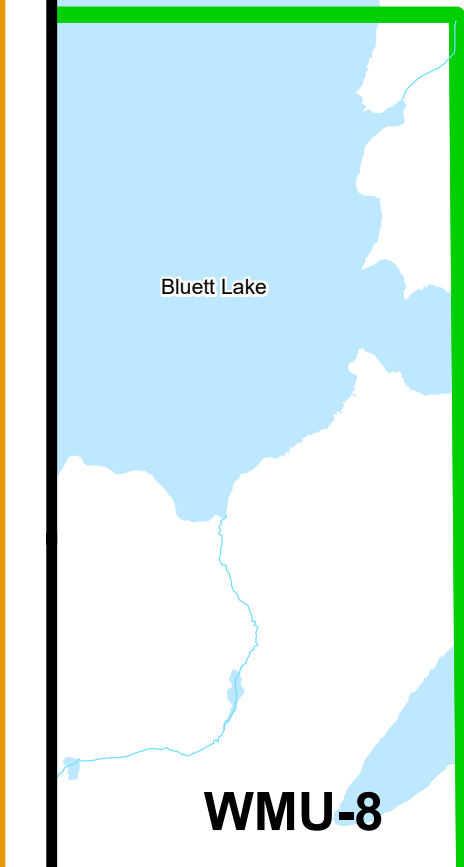
Daniel Yeboah, R.P.F.
SFL Planning Forester
Domtar
P.O. Box 4004
Dryden, ON P8N 3J7
Phone (807) 223-9090



1:30,000



This map is not intended for navigational use.



WMU-5

WMU-8

Legend

- First Nations Reserve
- No Hunting or Possession of Firearms
- SFL Boundary
- Wildlife Management Unit
- Trails
- Utilities**
 - Pipeline
 - Railway
 - Transmission line
- Roads**
 - Highway
 - Streams
 - Operational
 - Branch
 - Primary
 - Water
 - Parks and Conservation Reserves
 - 2021 Harvest Area
 - Patent Land

DISCLAIMER:

This map should not be relied upon as a precise indicator of routes, as a guide to navigation, to establish legal title, boundary lines or locations of improvements. Domtar Inc. and the Ontario Ministry of Natural Resources and Forestry shall not be liable in any way for the use of, or reliance upon, this map or any information on this map.

© Queen's Printer for Ontario 2021
© Domtar Inc. 2021

NOTES:

Planimetric Base Features maintained and provided by the Ontario Ministry of Natural Resources and Forestry (OMNRF, July 2017, Forest Information Manual. Toronto: Queen's Printer of Ontario). Transportation and Forest Resources information are from Domtar Inc. company files.

MAP: 5

Areas will be closed during active operations only



Wabigoon Forest

ATTENTION HUNTERS
NO HUNTING OR POSSESSION
OF FIREARMS AREAS 2021
Crosshatched Areas in Dryden District
CLOSED DURING ACTIVE OPERATIONS ONLY

Please Observe and Obey All Signs
ONTARIO GOVERNMENT NOTICE:
Closures are in effect during the open rifle season
(moose / deer) for the respective Wildlife
Management Unit during active operations only.

Firearms must be encased when
traveling through cross-hatched
area when signs are present.

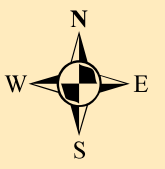
The areas will be clearly signed and hunters
are required to obey these signs.

Maps showing potentially closed areas will be
available for viewing in the M.N.R.F office
in Dryden and at major issuers of hunting
licenses in the Dryden area as well as at the
Domtar Gatehouse.

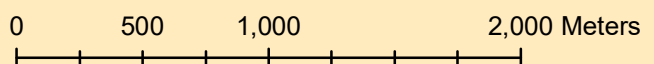
All closures are made under the authority of
Subsection 10(2) of the Fish and Wildlife
Conservation Act, R.S.O. 1997, Chapter 41,
for the purposes of safety of woods workers.

FOR FURTHER INFORMATION CONTACT:

Julie Edwards, R.P.F. Operations Forester Domtar P.O. Box 4004 Dryden, ON P8N 3J7 Phone (807) 223-9790	OR	Daniel Yeboah, R.P.F. SFL Planning Forester Domtar P.O. Box 4004 Dryden, ON P8N 3J7 Phone (807) 223-9090
---	----	---



1:30,000



This map is not intended for navigational use.

Legend

- First Nations Reserve
- No Hunting or Possession of Firearms
- SFL Boundary
- Wildlife Management Unit
- Trails

Utilities

- Pipeline
- Railway
- Transmission line

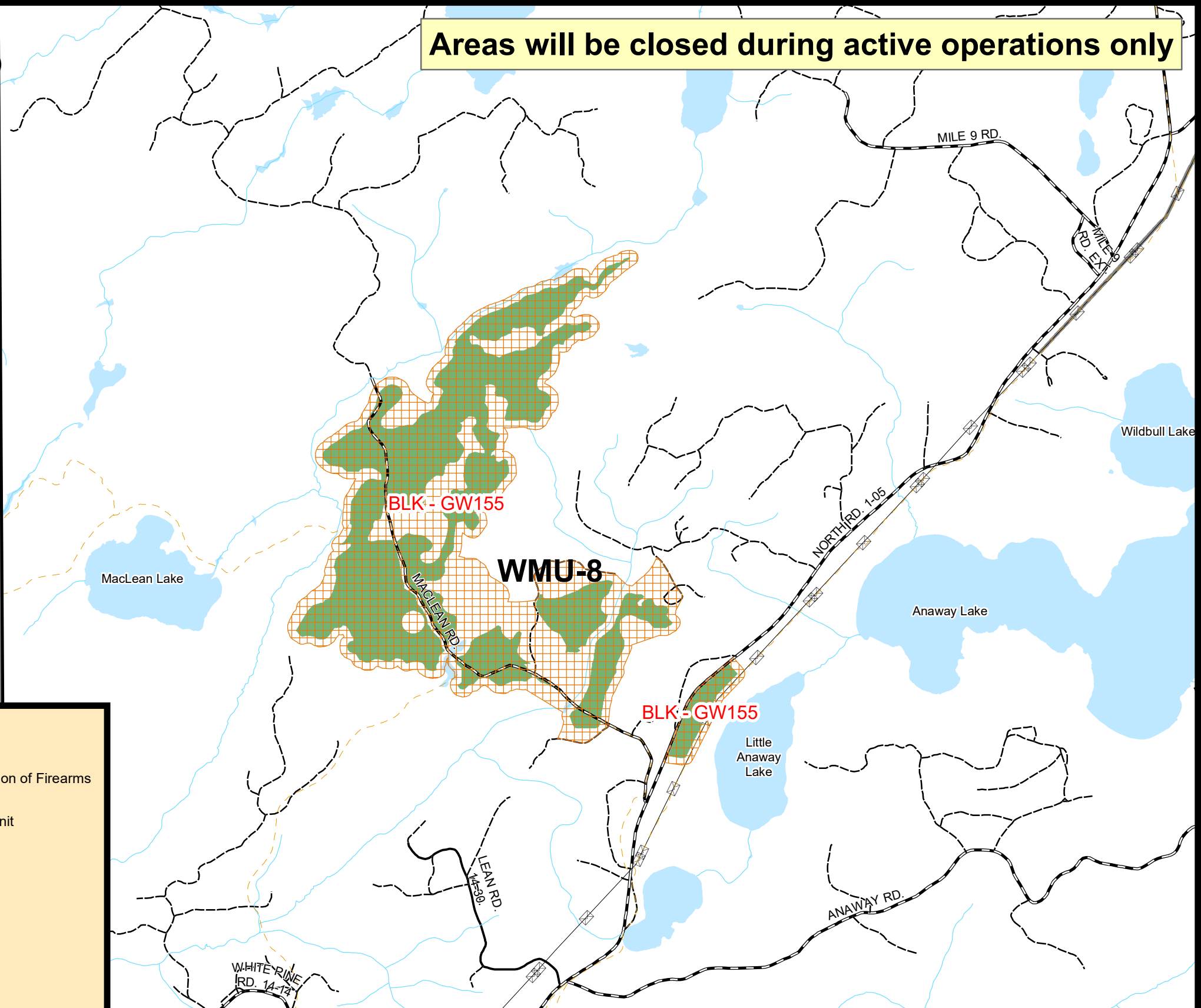
Roads

- Highway
- Streams
- Operational
- Branch
- Primary
- Water
- Parks and Conservation Reserves
- 2021 Harvest Area
- Patent Land

DISCLAIMER:
This map should not be relied upon as a precise indicator of routes, as a guide to navigation, to establish legal title, boundary lines or locations of improvements. Domtar Inc. and the Ontario Ministry of Natural Resources and Forestry shall not be liable in any way for the use of, or reliance upon, this map or any information on this map.

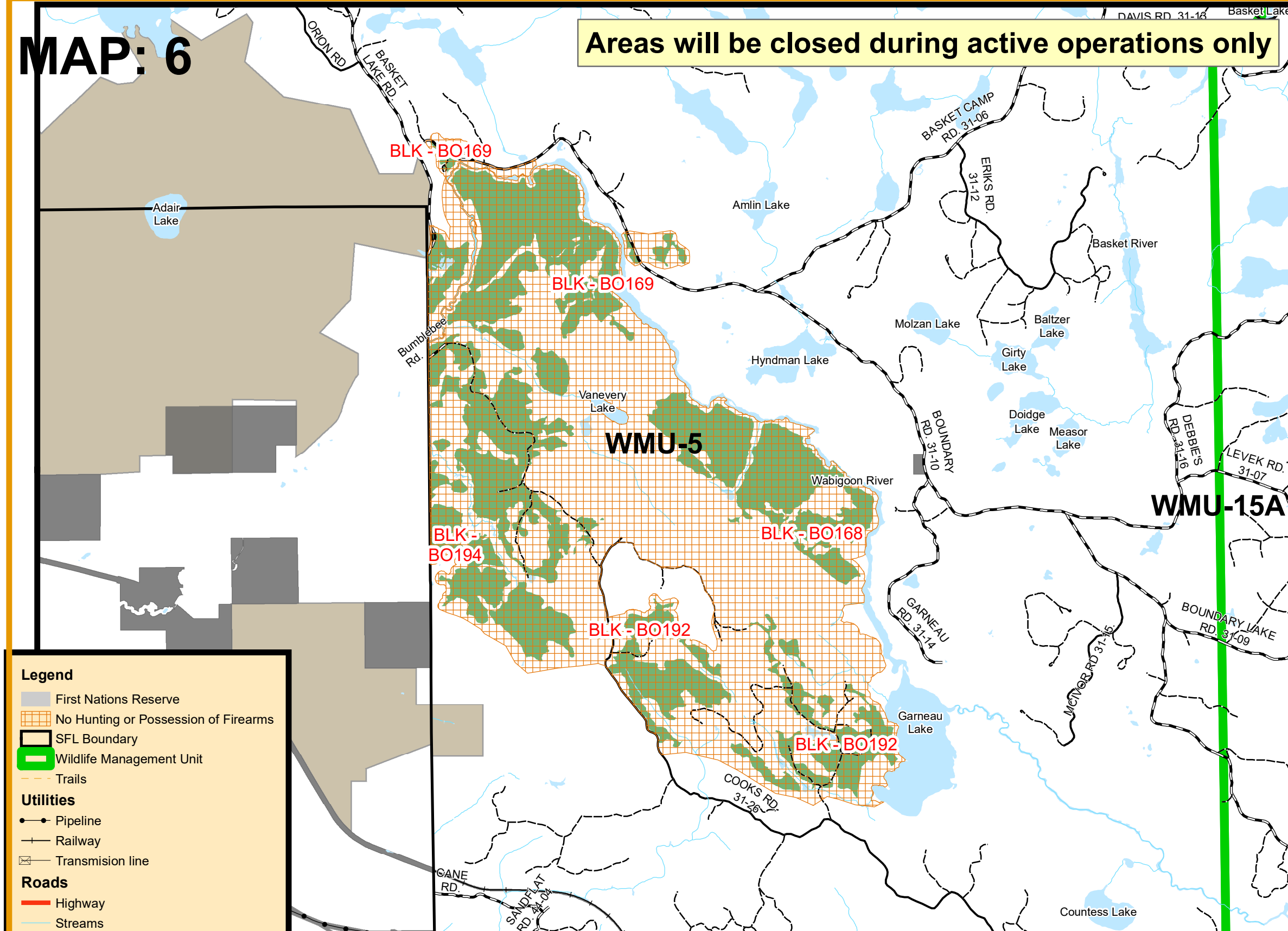
NOTES:
Planimetric Base Features maintained and provided by the Ontario Ministry of Natural Resources and Forestry (OMNRF, July 2017, Forest Information Manual. Toronto: Queen's Printer of Ontario). Transportation and Forest Resources information are from Domtar Inc. company files.

© Queen's Printer for Ontario 2021
© Domtar Inc. 2021



MAP: 6

Areas will be closed during active operations only



DISCLAIMER:
This map should not be relied upon as a precise indicator of routes, as a guide to navigation, to establish legal title, boundary lines or locations of improvements. Domtar Inc. and the Ontario Ministry of Natural Resources and Forestry shall not be liable in any way for the use of, or reliance upon, this map or any information on this map.

© Queen's Printer for Ontario 2021
© Domtar Inc. 2021

NOTES:
Planimetric Base Features maintained and provided by the Ontario Ministry of Natural Resources and Forestry (OMNRF, July 2017, Forest Information Manual. Toronto: Queen's Printer of Ontario). Transportation and Forest Resources information are from Domtar Inc. company files.



Wabigoon Forest

ATTENTION HUNTERS
NO HUNTING OR POSSESSION
OF FIREARMS AREAS 2021
Crosshatched Areas in Dryden District
CLOSED DURING ACTIVE OPERATIONS ONLY

Please Observe and Obey All Signs
ONTARIO GOVERNMENT NOTICE:
Closures are in effect during the open rifle season
(moose / deer) for the respective Wildlife
Management Unit during active operations only.

**Firearms must be encased when
traveling through cross-hatched
area when signs are present.**

The areas will be clearly signed and hunters
are required to obey these signs.

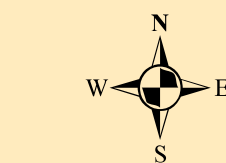
Maps showing potentially closed areas will be
available for viewing in the M.N.R.F office
in Dryden and at major issuers of hunting
licenses in the Dryden area as well as at the
Domtar Gatehouse.

All closures are made under the authority of
Subsection 10(2) of the Fish and Wildlife
Conservation Act, R.S.O. 1997, Chapter 41,
for the purposes of safety of woods workers.

FOR FURTHER INFORMATION CONTACT:

Julie Edwards, R.P.F.
Operations Forester
Domtar
P.O. Box 4004
Dryden, ON P8N 3J7
Phone (807) 223-9790

Daniel Yeboah, R.P.F.
SFL Planning Forester
Domtar
P.O. Box 4004
Dryden, ON P8N 3J7
Phone (807) 223-9090



1:50,000

0 850 1,700 3,400 Meters

This map is not intended for navigational use.

MAP: 7

Areas will be closed during active operations only



Wabigoon Forest

ATTENTION HUNTERS

NO HUNTING OR POSSESSION
OF FIREARMS AREAS 2021

Crosshatched Areas in Dryden District
CLOSED DURING ACTIVE OPERATIONS ONLY

Please Observe and Obey All Signs

ONTARIO GOVERNMENT NOTICE:

Closures are in effect during the open rifle season
(moose / deer) for the respective Wildlife
Management Unit during active operations only.

**Firearms must be encased when
traveling through cross-hatched
area when signs are present.**

The areas will be clearly signed and hunters
are required to obey these signs.

Maps showing potentially closed areas will be
available for viewing in the M.N.R.F office
in Dryden and at major issuers of hunting
licenses in the Dryden area as well as at the
Domtar Gatehouse.

All closures are made under the authority of
Subsection 10(2) of the Fish and Wildlife
Conservation Act, R.S.O. 1997, Chapter 41,
for the purposes of safety of woods workers.

FOR FURTHER INFORMATION CONTACT:

Julie Edwards, R.P.F.
Operations Forester
Domtar
P.O. Box 4004
Dryden, ON P8N 3J7
Phone (807) 223-9790

OR

Daniel Yeboah, R.P.F.
SFL Planning Forester
Domtar
P.O. Box 4004
Dryden, ON P8N 3J7
Phone (807) 223-9090



1:50,000

0 850 1,700 3,400 Meters

This map is not intended for navigational use.

Legend

- First Nations Reserve
- No Hunting or Possession of Firearms
- SFL Boundary
- Wildlife Management Unit
- Trails
- Utilities**
 - Pipeline
 - Railway
 - Transmission line
- Roads**
 - Highway
 - Streams
 - Operational
 - Branch
 - Primary
 - Water
 - Parks and Conservation Reserves
 - 2021 Harvest Area
 - Patent Land

DISCLAIMER:

This map should not be relied upon as a precise indicator of routes, as a guide to navigation, to establish legal title, boundary lines or locations of improvements. Domtar Inc. and the Ontario Ministry of Natural Resources and Forestry shall not be liable in any way for the use of, or reliance upon, this map or any information on this map.

© Queen's Printer for Ontario 2021
© Domtar Inc. 2021

NOTES:

Planimetric Base Features maintained and provided by the Ontario Ministry of Natural Resources and Forestry (OMNRF, July 2017, Forest Information Manual. Toronto: Queen's Printer of Ontario). Transportation and Forest Resources information are from Domtar Inc. company files.

MAP: 8

Areas will be closed during active operations only



Wabigoon Forest

ATTENTION HUNTERS
NO HUNTING OR POSSESSION
OF FIREARMS AREAS 2021
Crosshatched Areas in Dryden District
CLOSED DURING ACTIVE OPERATIONS ONLY

Please Observe and Obey All Signs
ONTARIO GOVERNMENT NOTICE:
Closures are in effect during the open rifle season
(moose / deer) for the respective Wildlife
Management Unit during active operations only.

Firearms must be encased when
traveling through cross-hatched
area when signs are present.

The areas will be clearly signed and hunters
are required to obey these signs.

Maps showing potentially closed areas will be
available for viewing in the M.N.R.F office
in Dryden and at major issuers of hunting
licenses in the Dryden area as well as at the
Domtar Gatehouse.

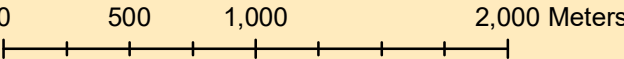
All closures are made under the authority of
Subsection 10(2) of the Fish and Wildlife
Conservation Act, R.S.O. 1997, Chapter 41,
for the purposes of safety of woods workers.

FOR FURTHER INFORMATION CONTACT:

Julie Edwards, R.P.F. Operations Forester Domtar P.O. Box 4004 Dryden, ON P8N 3J7 Phone (807) 223-9790	OR	Daniel Yeboah, R.P.F. SFL Planning Forester Domtar P.O. Box 4004 Dryden, ON P8N 3J7 Phone (807) 223-9090
---	----	---



1:30,000



This map is not intended for navigational use.

Legend

- First Nations Reserve
- No Hunting or Possession of Firearms
- SFL Boundary
- Wildlife Management Unit
- Trails
- Utilities
 - Pipeline
 - Railway
 - Transmission line
- Roads
 - Highway
 - Streams
 - Operational
 - Branch
 - Primary
- Water
- Parks and Conservation Reserves
- 2021 Harvest Area
- Patent Land

DISCLAIMER:
This map should not be relied upon as a precise indicator of routes, as a guide to navigation, to establish legal title, boundary lines or locations of improvements. Domtar Inc. and the Ontario Ministry of Natural Resources and Forestry shall not be liable in any way for the use of, or reliance upon, this map or any information on this map.

© Queen's Printer for Ontario 2021
© Domtar Inc. 2021

NOTES:
Planimetric Base Features maintained and provided by the Ontario Ministry of Natural Resources and Forestry (OMNRF, July 2017, Forest Information Manual. Toronto: Queen's Printer of Ontario). Transportation and Forest Resources information are from Domtar Inc. company files.

MAP: 9

Areas will be closed during active operations only



Wabigoon Forest

ATTENTION HUNTERS

NO HUNTING OR POSSESSION
OF FIREARMS AREAS 2021

Crosshatched Areas in Dryden District
CLOSED DURING ACTIVE OPERATIONS ONLY

Please Observe and Obey All Signs

ONTARIO GOVERNMENT NOTICE:

Closures are in effect during the open rifle season
(moose / deer) for the respective Wildlife
Management Unit during active operations only.

**Firearms must be encased when
traveling through cross-hatched
area when signs are present.**

The areas will be clearly signed and hunters
are required to obey these signs.

Maps showing potentially closed areas will be
available for viewing in the M.N.R.F office
in Dryden and at major issuers of hunting
licenses in the Dryden area as well as at the
Domtar Gatehouse.

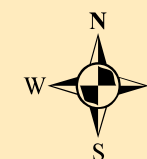
All closures are made under the authority of
Subsection 10(2) of the Fish and Wildlife
Conservation Act, R.S.O. 1997, Chapter 41,
for the purposes of safety of woods workers.

FOR FURTHER INFORMATION CONTACT:

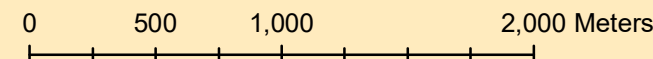
Julie Edwards, R.P.F.
Operations Forester
Domtar
P.O. Box 4004
Dryden, ON P8N 3J7
Phone (807) 223-9790

OR

Daniel Yeboah, R.P.F.
SFL Planning Forester
Domtar
P.O. Box 4004
Dryden, ON P8N 3J7
Phone (807) 223-9090



1:30,000



This map is not intended for navigational use.

Legend

- First Nations Reserve
- No Hunting or Possession of Firearms
- SFL Boundary
- Wildlife Management Unit
- Trails
- Utilities**
 - Pipeline
 - Railway
 - Transmission line
- Roads**
 - Highway
 - Streams
 - Operational
 - Branch
 - Primary
- Water
- Parks and Conservation Reserves
- 2021 Harvest Area
- Patent Land

DISCLAIMER:

This map should not be relied upon as a precise indicator of routes, as a guide to navigation, to establish legal title, boundary lines or locations of improvements. Domtar Inc. and the Ontario Ministry of Natural Resources and Forestry shall not be liable in any way for the use of, or reliance upon, this map or any information on this map.

© Queen's Printer for Ontario 2021
© Domtar Inc. 2021

NOTES:

Planimetric Base Features maintained and provided by the Ontario Ministry of Natural Resources and Forestry (OMNRF, July 2017, Forest Information Manual. Toronto: Queen's Printer of Ontario). Transportation and Forest Resources information are from Domtar Inc. company files.